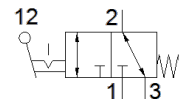


toggle lever valve KH/O-3-PK-3

Part number: 33003

FESTO

With barbed fitting connection for tubing ND 3 mm. Depending on the choice of connections, normally-open or normally-closed function.



Data sheet

Feature	Value
Valve function	3/2 open/closed, monostable
Standard nominal flow rate	80 l/min
Operating pressure	0 ... 8 bar
Design structure	Piston seat
Nominal size	2.5 mm
Type of piloting	direct
Ambient temperature	-10 ... 60 °C
Actuating force for normally closed	7.5 N
Actuating force for normally open	6.5 N
Product weight	20 g
Mounting type	with through hole
Pneumatic connection, port 1	PK-3
Pneumatic connection, port 2	PK-3
Pneumatic connection, port 3	PK-3
Material seals	NBR
Material housing	Plastic