

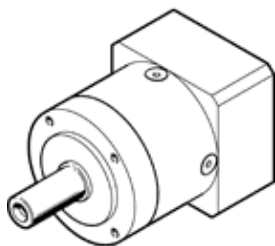
gear unit EMGA-60-P-G3-EAS-60

Part number: 2297686

☆ Core product range

Suitable for servo motors.

FESTO



Data sheet

Feature	Value
Gear unit flange size	60 mm
Motor flange size	60 mm
Torsional backlash	0.17 deg
Type of gear unit	Planetary gear unit
Gear unit ratio	3:1
Max. input speed	13,000 1/min
Operating temperature of gear unit	-25 ... 90 °C
Protection class	IP54
Continuous output torque	28 Nm
Mass moment of inertia of gear unit	0.135 kgcm ²
Max. output torque	45 Nm
Max. efficiency	98 %
Torsional resistance	2.3 Nm/arcmin
Product weight	900 g
Gear unit interface, output shaft	60H
Gear unit interface, drive shaft	60P
Materials note	Conforms to RoHS