

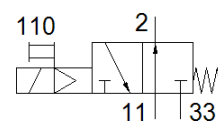
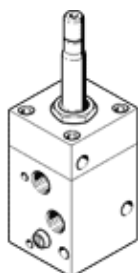
# solenoid valve

## MOCH-3-1/4

Part number: 2210

FESTO

With manual override.



## Data sheet

Feature	Value
Valve function	3/2 open, monostable
Type of actuation	electrical
Operating pressure	0 ... 10 bar
Design structure	Poppet seat
Type of reset	mechanical spring
Sealing principle	soft
Type of piloting	Piloted
Pneumatic connection, port 1	G1/4
Pneumatic connection, port 2	G1/4
Pneumatic connection, port 3	G1/4
Materials note	Conforms to RoHS
Material seals	NBR
Material housing	Wrought Aluminium alloy