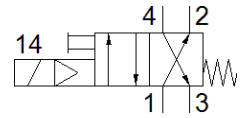
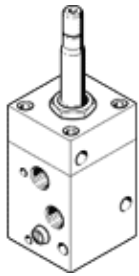


solenoid valve

MCH-4-1/4

Part number: 2201

FESTO



Data sheet

Feature	Value
Valve function	4/2 monostable
Type of actuation	electrical
Operating pressure	2 ... 10 bar
Design structure	Poppet seat
Type of reset	mechanical spring
Protection class	IP65
Sealing principle	soft
Type of piloting	Piloted
Switching time off	23 ms
Switching time on	16 ms
Medium temperature	-10 ... 60 °C
Ambient temperature	-5 ... 40 °C
Pneumatic connection, port 1	G1/4
Pneumatic connection, port 2	G1/4
Pneumatic connection, port 3	G1/4
Pneumatic connection, port 4	G1/4
Materials note	Conforms to RoHS
Material housing	Aluminium casting