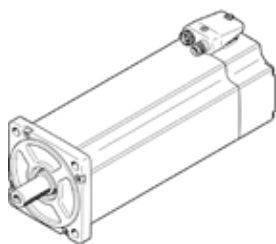


servo motor EMME-AS-100-M-HS-ASB

Part number: 2103501

FESTO

Without gear unit/with brake.



Data sheet

Feature	Value
Ambient temperature	-10 ... 40 °C
Storage temperature	-20 ... 70 °C
Relative air humidity	0 - 90 %
Conforms to standard	IEC 60034
Insulation protection class	F
Rating class according to EN 60034-1	S1
Protection class	IP21
Electrical connector system	Plug
Materials note	Contains PWIS substances Conforms to RoHS
Corrosion resistance classification CRC	0 - No corrosion stress
Authorisation	RCM Mark c UL us - Recognized (OL)
CE mark (see declaration of conformity)	to EU directive for EMC to EU directive low-voltage devices
Nominal operating voltage DC	565 V
Nominal voltage DC	565 V
Type of winding switch	Star inside
Number of pole pairs	3
Standstill torque	7.5 Nm
Nominal torque	6.4 Nm
Peak torque	30 Nm
Nominal rotary speed	3,000 1/min
Max. speed	3,941 1/min
Nominal motor power	2,000 W
Continuous open-circuit current	4.6 A
Nominal motor current	4.1 A
Peak current	18.4 A
Motor constant	1.561 Nm/A
Voltage constant, phase-to-phase	101.4 mVmin
Phase-phase winding resistance	3.2 Ohm
Phase-phase winding inductance	12 mH
Overall mass moment of inertia at power take-off	7.2 kgcm ²
Product weight	8,550 g
Permissible axial shaft load	136 N
Permissible radial shaft load	680 N
Rotor position sensor	Absolute single turn encoder
Rotary position encoder interface	HIPERFACE®
Rotary position encoder measuring principle	Capacitive
Rotary position encoder, sinusoidal/cosinusoidal periods per revolution	16
Rotary position encoder, typical resolution	12 Bit
Rotary position encoder, typical angular accuracy	20 arcmin
Brake holding torque	9 Nm
Operating voltage DC for brake	24 V

Feature	Value
Power consumption, brake	18 W
Mass moment of inertia of brake	0.654 kgcm ²
Switching cycles, holding brake	5 million idle actuations (without work of friction!)
MTTF, subcomponent	1037 years, holding brake
MTTFd, subcomponent	340 years, rotary position encoder