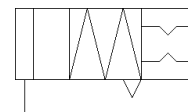
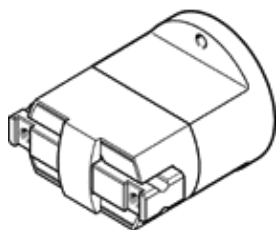


# parallel gripper HGPM-08-EO-G9

Part number: 197561

FESTO

Direct flange mounting with screws Locating pins are used for centring.



## Data sheet

Feature	Value
Size	8
Stroke per gripper jaw	2 mm
Max. replacement accuracy	0.2 mm
Rotationally symmetrical	0.15 mm
Repetition accuracy, gripper	≤ 0.05 mm
Number of gripper fingers	2
Mode of operation	single-acting open
Gripper function	Parallel
Design structure	Inclined plane
Position detection	No
Total force at 6 bar, opening	16 N
Operating pressure	4 ... 8 bar
Max. operating frequency of gripper	4 Hz
Min. opening time at 6 bar	4.9 ms
Min. closing time at 6 bar	2.3 ms
Operating medium	Compressed air in accordance with ISO8573-1:2010 [7:4:4]
Note on operating and pilot medium	Lubricated operation possible (subsequently required for further operation)
Corrosion resistance classification CRC	1 - Low corrosion stress
Ambient temperature	5 ... 60 °C
Gripping force per gripper jaw at 6 bar, closing	8 N
Max. force on gripper jaw Fz static	10 N
Max. torque at gripper Mx static	0.1 Nm
Max. torque at gripper My static	0.1 Nm
Max. torque at gripper Mz static	0.1 Nm
Product weight	18 g
Mounting type	with internal (female) thread
Pneumatic connection	M3
Materials note	Free of copper and PTFE
Material cover cap	POM
Material housing	Wrought Aluminium alloy Anodised
Material gripper jaws	High alloy steel