

# service unit FRCS-1-D-MAXI-A

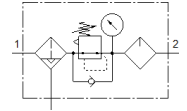
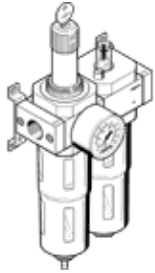
Part number: 194961  
Classic - do not use for new projects

FESTO

Filter/pressure regulator/lubricator combination,  
D series, with lockable regulator head.

Modern alternatives can be found by entering the first four characters  
of the type code in the search field.

Type to be discontinued. Available until 2022. See Support Portal for  
alternative products.



## Data sheet

| Feature                            | Value  |
|------------------------------------|--|
| Size                               | Maxi   |
| Series                             | D  |
| Actuator lock                      | Rotary knob with integrated lock   |
| Assembly position                  | Vertical +/- 5°  |
| Condensate drain                   | fully automatic  |
| Design structure                   | Filter regulator with pressure gauge<br>proportional standard mist lubricator  |
| Max. condensate volume             | 80 cm <sup>3</sup>   |
| Grade of filtration                | 40 µm  |
| Bowl guard                         | Metal bowl guard   |
| Pressure gauge                     | with pressure gauge  |
| Operating pressure                 | 2 ... 12 bar   |
| Pressure regulation range          | 0.5 ... 12 bar   |
| Max. pressure hysteresis           | 0.4 bar  |
| Standard nominal flow rate         | 8,500 l/min  |
| Operating medium                   | Compressed air to ISO 8573-1:2010 [7:9:-]<br>Inert gases                       |
| Note on operating and pilot medium | Lubricated operation possible (subsequently required for further<br>operation) |
| Air purity class at output         | Compressed air to ISO 8573-1:2010 [7:8:-]                                      |
| Medium temperature                 | -10 ... 60 °C  |
| Ambient temperature                | -10 ... 60 °C  |
| Product weight                     | 2,620 g  |
| Mounting type                      | Line installation<br>with accessories  |
| Pneumatic connection, port 1       | G1   |
| Pneumatic connection, port 2       | G1   |
| Material housing                   | Zinc die-casting   |
| Material bowl                      | PC   |