

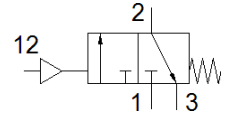
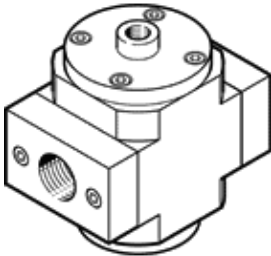
on-off valve HEP-D-MINI

Part number: 193242
Classic - do not use for new projects

FESTO

For service units, without threaded connection plates with FRB threaded pin

Modern alternatives can be found by entering the first four characters of the type code in the search field.



Data sheet

Feature	Value
Design structure	Piston slide
Type of actuation	pneumatic
Sealing principle	soft
Exhaust-air function	not throttleable
Manual override	None
Type of reset	mechanical spring
Valve function	3/2 closed, monostable
Operating pressure	0 ... 16 bar
Pilot pressure	3 ... 16 bar
Operating medium	Compressed air in accordance with ISO8573-1:2010 [7:4:4] Inert gases
Note on operating and pilot medium	Lubricated operation possible (subsequently required for further operation)
Corrosion resistance classification CRC	2 - Moderate corrosion stress
Materials note	Conforms to RoHS
Medium temperature	-10 ... 60 °C
Ambient temperature	-10 ... 60 °C
Maritime classification	see certificate
Mounting type	Line installation with accessories
Assembly position	Any
Flow direction	non reversible
Product weight	223 g
Pneumatic connection, port 3	G1/8
Pilot air port 12	G1/8
Air purity class at output	Compressed air in accordance with ISO8573-1:2010 [7:4:4] Inert gases
Material seals	NBR
Material housing	Aluminium die cast