

service unit

FRC-3/4-D-DI-MAXI-KC-A

Part number: 192485

Classic - do not use for new projects

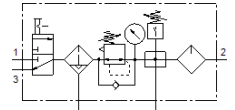
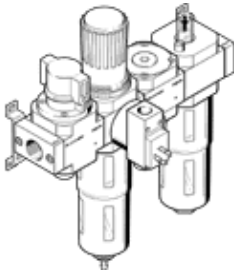
consisting of manual on/off valve, filter regulator, distributor module with pressure switch but without socket, and lubricator with mounting brackets.

With automatic condensate drain and metal bowl guard.

Modern alternatives can be found by entering the first four characters of the type code in the search field.

Type to be discontinued. Available until 2022. See Support Portal for alternative products.

FESTO



Data sheet

| Feature | Value |
|-----------------------------------------|--------------------------------------------------------------------------------------------------------------------------------------|
| Size | Maxi |
| Series | D |
| Actuator lock | Rotary knob with lock |
| Assembly position | Vertical +/- 5° |
| Grade of filtration | 40 µm |
| Condensate drain | fully automatic |
| Design structure | Branching module Pressure sensor On/off valve Filter regulator with pressure gauge proportional standard mist lubricator |
| Max. condensate volume | 43 cm ³ |
| Bowl guard | Metal bowl guard |
| Pressure gauge | with pressure gauge |
| Operating pressure | 1.5 ... 12 bar |
| Pressure regulation range | 0.5 ... 12 bar |
| Standard nominal flow rate | 5,400 l/min |
| Maritime classification | see certificate |
| Operating medium | Compressed air in accordance with ISO8573-1:2010 [-:~:] Inert gases |
| Corrosion resistance classification CRC | 2 - Moderate corrosion stress |
| Air purity class at output | Compressed air in accordance with ISO8573-1:2010 [7:4:-] Inert gases |
| Medium temperature | -10 ... 60 °C |
| Ambient temperature | -10 ... 60 °C |
| Product weight | 4,800 g |
| Mounting type | Line installation with accessories Optional |
| Pneumatic connection, port 1 | G3/4 |
| Pneumatic connection, port 2 | G3/4 |
| Materials note | Contains PWIS substances |
| Material housing | Zinc die-casting |
| Material bowl | PC |