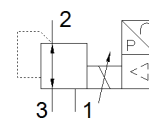


# proportional pressure regulator MPPE-3-1/8-6-420

Part number: 187353

FESTO



## Data sheet

Feature	Value
Nominal diameter, pressurisation	3 mm
Nominal diameter, exhaust	2 mm
Type of actuation	electrical
Sealing principle	soft
Assembly position	Any
Design structure	directly-controlled piston regulator
Short circuit strength	for all electrical connections
Safety instructions	Safety position of MPPEs
Polarity protected	for all electrical connections
Valve function	3-way closed proportional-pressure regulator
Operating pressure	$\leq 8$ bar
Pressure regulation range	0 ... 6 bar
Inlet pressure 1	7 ... 8 bar
Max. pressure hysteresis	0.01 bar
Switching time off	280 ms
Switching time on	210 ms
Operating voltage range DC	18 ... 30 V
Residual ripple	10 %
SETPOINT/ACTUAL values	Current type 4 - 20 mA
Operating medium	Compressed air in accordance with ISO8573-1:2010 [7:4:4] Inert gases
Note on operating and pilot medium	Lubricated operation possible (subsequently required for further operation)
Authorisation	RCM Mark
KC mark	KC-EMV
CE mark (see declaration of conformity)	to EU directive for EMC
Corrosion resistance classification CRC	2 - Moderate corrosion stress
Medium temperature	0 ... 60 °C
Protection class	IP65
Ambient temperature	0 ... 50 °C
Product weight	915 g
Electrical connection	8-pin M16x0,75 Plug to DIN 45326 Round design
Mounting type	with through hole
Pneumatic connection, port 1	G1/8
Pneumatic connection, port 2	G1/8
Pneumatic connection, port 3	G1/8
Materials note	Conforms to RoHS
Material housing	Wrought Aluminium alloy
Material membrane	NBR