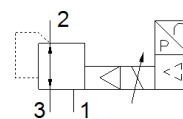


# proportional pressure regulator MPPE-3-1/4-2-420

Part number: 187336

FESTO



## Data sheet

Feature	Value
Nominal diameter, pressurisation	7 mm
Nominal diameter, exhaust	7 mm
Type of actuation	electrical
Sealing principle	soft
Assembly position	Any
Design structure	Piloted piston regulator
Short circuit strength	for all electrical connections
Safety instructions	Safety position of MPPE
Polarity protected	for all electrical connections
Valve function	3-way closed proportional-pressure regulator
Operating pressure	$\leq 4$ bar
Pressure regulation range	0 ... 2 bar
Inlet pressure 1	3 ... 4 bar
Max. pressure hysteresis	0.05 bar
Switching time off	890 ms
Switching time on	200 ms
Operating voltage range DC	18 ... 30 V
Residual ripple	10 %
SETPOINT/ACTUAL values	Current type 4 - 20 mA
Operating medium	Compressed air in accordance with ISO8573-1:2010 [7:4:4] Inert gases
Note on operating and pilot medium	Lubricated operation possible (subsequently required for further operation)
Authorisation	RCM Mark
KC mark	KC-EMV
CE mark (see declaration of conformity)	to EU directive for EMC
Corrosion resistance classification CRC	2 - Moderate corrosion stress
Medium temperature	0 ... 60 °C
Protection class	IP65
Ambient temperature	0 ... 50 °C
Product weight	1,310 g
Electrical connection	8-pin M16x0,75 Plug to DIN 45326 Round design
Mounting type	with through hole
Pneumatic connection, port 1	G1/4
Pneumatic connection, port 2	G1/4
Pneumatic connection, port 3	G1/4
Materials note	Conforms to RoHS
Material housing	Wrought Aluminium alloy
Material membrane	NBR