

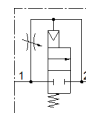
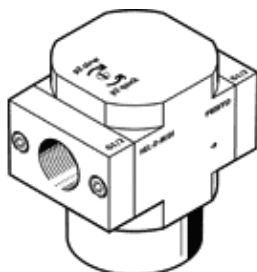
on-off valve HEL-1/4-D-MIDI

Part number: 186521
Classic - do not use for new projects

FESTO

Used in conjunction with service units for gradual pressure build-up.
The valve function is equivalent to a 2/2-way valve.

Modern alternatives can be found by entering the first four characters of the type code in the search field.



Data sheet

| Feature | Value |
|-----------------------------------------|-----------------------------------------------------------------------------|
| Exhaust-air function | throttleable |
| Type of actuation | pneumatic |
| Sealing principle | soft |
| Assembly position | Any |
| Manual override | None |
| Design structure | Piston slide |
| Type of reset | mechanical spring |
| Type of piloting | direct |
| Flow direction | non reversible |
| Valve function | 2/2 closed, monostable |
| Operating pressure | 3 ... 16 bar |
| b value | 0.59 |
| C value | 9 l/sbar |
| Standard nominal flow rate | 2,600 l/min |
| Maritime classification | see certificate |
| Operating medium | Compressed air in accordance with ISO8573-1:2010 [7:4:4] Inert gases |
| Note on operating and pilot medium | Lubricated operation possible (subsequently required for further operation) |
| Corrosion resistance classification CRC | 2 - Moderate corrosion stress |
| Air purity class at output | Compressed air in accordance with ISO8573-1:2010 [7:4:4] Inert gases |
| Medium temperature | -10 ... 60 °C |
| Ambient temperature | -10 ... 60 °C |
| Product weight | 270 g |
| Mounting type | Line installation |
| Pneumatic connection, port 1 | G1/4 |
| Pneumatic connection, port 2 | G1/4 |
| Materials note | Conforms to RoHS |
| Material seals | NBR |
| Material housing | Aluminium die cast |