

## service unit FRC-1/2-D-O-MAXI-A

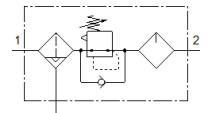
Part number: 186509

Classic - do not use for new projects

FESTO

Filter/regulator/lubricator combination, bar, 40 µm filter, with metal bowl guard. With automatic condensate drain. Without pressure gauge.

Modern alternatives can be found by entering the first four characters of the type code in the search field.



### Data sheet

| Feature                                 | Value  |
|---|--|
| Size                                    | Maxi   |
| Series                                  | D  |
| Actuator lock                           | Rotary knob with lock  |
| Assembly position                       | Vertical +/- 5°  |
| Condensate drain                        | fully automatic  |
| Design structure                        | Filter regulator without pressure gauge<br>proportional standard mist lubricator |
| Max. condensate volume                  | 80 cm <sup>3</sup>   |
| Grade of filtration                     | 40 µm  |
| Bowl guard                              | Metal bowl guard   |
| Pressure gauge                          | Prepared for G1/4  |
| Operating pressure                      | 2 ... 12 bar   |
| Pressure regulation range               | 0.5 ... 12 bar   |
| Max. pressure hysteresis                | 0.4 bar  |
| Standard nominal flow rate              | 7,600 l/min  |
| Maritime classification                 | see certificate  |
| Operating medium                        | Compressed air to ISO 8573-1:2010 [7:9:-]<br>Inert gases                         |
| Note on operating and pilot medium      | Lubricated operation possible (subsequently required for further operation)      |
| Corrosion resistance classification CRC | 2 - Moderate corrosion stress  |
| Air purity class at output              | Compressed air to ISO 8573-1:2010 [7:8:-]  |
| Medium temperature                      | -10 ... 60 °C  |
| Ambient temperature                     | -10 ... 60 °C  |
| Product weight                          | 2,280 g  |
| Mounting type                           | Line installation<br>with accessories  |
| Pneumatic connection, port 1            | G1/2   |
| Pneumatic connection, port 2            | G1/2   |
| Material housing                        | Zinc die-casting   |
| Material bowl                           | PC   |