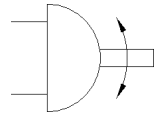
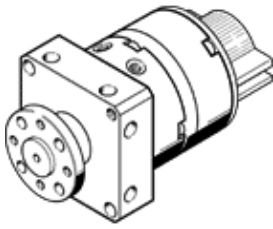


semi-rotary drive DSM-8-180-P-A-FF-FW

Part number: 185939

FESTO

with flanged shaft, fixed stop and position sensing



Data sheet

Feature	Value
Size	8
Cushioning angle	0 deg
Rotation angle adjustment range	0 ... 180 deg
Swivel angle	0 ... 180 deg
Assembly position	Any
Fine adjustment	-5 deg
Mode of operation	double-acting
Design structure	Rotary vane
Position detection	For proximity sensor
Operating pressure	3.5 ... 8 bar
Max. swivel frequency at 6 bar	3 Hz
Operating medium	Compressed air in accordance with ISO8573-1:2010 [7:4:4]
Note on operating and pilot medium	Lubricated operation possible (subsequently required for further operation)
Ambient temperature	0 ... 60 °C
Theoretical torque at 6 bar	0.35 Nm
Permissible mass moment of inertia	0.0013 kgm ²
Product weight	162 g
Mounting type	with internal (female) thread
Pneumatic connection	M3
Materials note	Free of copper and PTFE Conforms to RoHS
Material of drive shaft	High alloy steel, non-corrosive
Material seals	TPE-U(PU)
Material housing	Aluminium Anodised