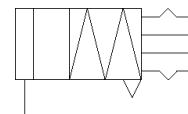
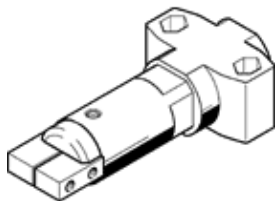


# angle gripper HGWM-08-EZ-G6

Part number: 185696

FESTO

Micro, stroke compensation.



## Data sheet

Feature	Value
Size	8
Max. angular gripper jaw backlash ax,ay	0.5 deg
Max. gripper jaw backlash Sz	0.03 mm
Max. opening angle	14 deg
Repetition accuracy, gripper	≤ 0.02 mm
Number of gripper fingers	2
Mode of operation	single-acting closed
Gripper function	Angle
Design structure	Inclined plane
Position detection	No
Operating pressure	2 ... 8 bar
Max. operating frequency of gripper	4 Hz
Min. opening time at 6 bar	1 ms
Min. closing time at 6 bar	2.5 ms
Operating medium	Compressed air in accordance with ISO8573-1:2010 [7:::]
Corrosion resistance classification CRC	2 - Moderate corrosion stress
Ambient temperature	5 ... 60 °C
Spring force of stroke compensator	4 ... 6 N
Spring return moment	0.55 Ncm
Total gripping torque at 6 bar, opening	24 Ncm
Max. force on gripper jaw Fz static	7 N
Max. torque at gripper Mx static	20 Ncm
Max. torque at gripper My static	20 Ncm
Max. torque at gripper Mz static	20 Ncm
Product weight	23 g
Mounting type	with internal (female) thread
Pneumatic connection	M3
Materials note	Free of copper and PTFE
Material cover cap	POM
Material housing	High alloy steel, non-corrosive
Material gripper jaws	High alloy steel