

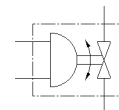
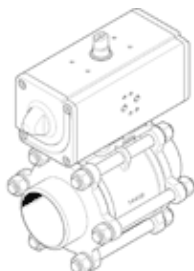
# ball valve actuator unit

## VZBA-4"-WW-63-T-22-F10-V4V4T-PP240-R-90-C

Part number: 1810740

FESTO

2/2-way, flange hole pattern F10, welded end.



### Data sheet

Feature	Value
Design structure	2-way ball valve Swivel drive
Type of actuation	pneumatic
Assembly position	Any
Mounting type	Line installation
Process valve connection	Weld-on ends/weld-on ends
Switching position indicator	Slot direction = flow direction
Nominal diameter DN	100
Operating pressure	6 ... 8.4 bar
Nominal pressure of process valve	63
Medium	Compressed air in accordance with ISO8573-1:2010 [-:~:] Inert gases Water (no water vapour) Neutral fluids
Operating medium	Compressed air in accordance with ISO8573-1:2010 [7:4:4]
Note on operating and pilot medium	Lubricated operation possible (subsequently required for further operation)
Medium temperature	-10 ... 200 °C
Ambient temperature	-10 ... 80 °C
Flow rate Kv	1,414 m <sup>3</sup> /h
Max. surface temperature assembly	TX
Explosion group assembly	IIC, IIIC
Materials note	Contains PWIS substances Conforms to RoHS
Material housing	High alloy steel, non-corrosive
Material number for housing	1.4408
Material seals	PTFE PTFE reinforced
Material ball	High alloy steel, non-corrosive
Material number for ball	1.4408
Material shaft	High alloy steel, non-corrosive
Material number for shaft	1.4401
Product weight	27,700 g
Explosion-proof ambient temperature	-10°C ≤ Ta ≤ +60°C
Corrosion resistance classification CRC	3 - High corrosion stress