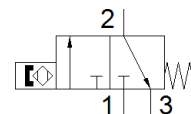
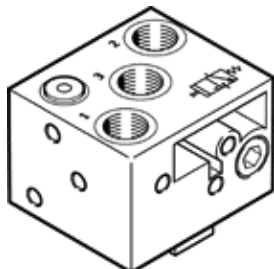


# proximity sensor SMPO-8E

Part number: 178563

FESTO

Pneumatic, for drives with T-slot, without mounting kit.  
Separate mounting component SMB-8E required (part no. 178230)



## Data sheet

| Feature                            | Value  |
|------------------------------------|--|
| Design                             | for T-slot   |
| Materials note                     | Free of copper and PTFE<br>Conforms to RoHS                            |
| Measuring principle                | Magnetic   |
| Operating pressure                 | 2 ... 8 bar  |
| Operating medium                   | Compressed air in accordance with ISO8573-1:2010 [6:4:4]               |
| Note on operating and pilot medium | Lubricated operation not possible                                      |
| Ambient temperature                | -15 ... 60 °C  |
| Reproducibility of switching value | +/- 0,2 mm   |
| Switch-on time                     | 22 ms  |
| Switch-off time                    | 52 ms  |
| Mounting type                      | with through hole<br>with accessories<br>Insertable in slot from above |
| Valve function                     | 3/2  |
| Pneumatic connection               | M5   |
| Product weight                     | 11 g   |
| Material housing                   | Aluminium<br>PA<br>Anodised<br>High alloy steel, non-corrosive         |
| Operating status display           | Optical  |
| Protection class                   | IP65   |