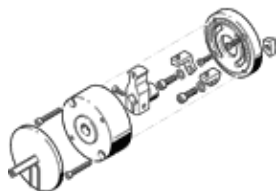


stop kit KSM-8

Part number: 175834

FESTO

for semi-rotary drive DSM-..., infinitely adjustable, with fine end-position adjustment



Data sheet

Feature	Value
Size	8
Rotation angle adjustment range	0 ... 180 deg
Swivel angle	180 deg
Assembly position	Any
Fine adjustment	-5 deg
Design structure	Stop lever
Position detection	No
Ambient temperature	0 ... 60 °C
Product weight	70 g
Material of cover	PA-reinforced
Materials note	Free of copper and PTFE
Material stops	High alloy steel, non-corrosive
Material housing	Aluminium Anodised