

on-off valve

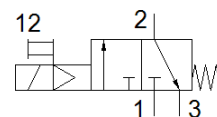
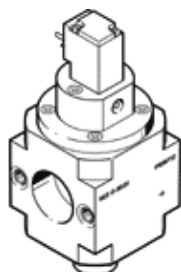
HEE-D-MIDI-230

Part number: 172961
Classic - do not use for new projects

FESTO

For service units, without threaded connection plates with FRB threaded pin

Modern alternatives can be found by entering the first four characters of the type code in the search field.



Data sheet

| Feature | Value |
|---|---|
| Design structure | Piston slide |
| Type of actuation | electrical |
| Sealing principle | soft |
| Exhaust-air function | not throttleable |
| Manual override | detenting |
| Type of reset | mechanical spring |
| Type of piloting | Piloted |
| Valve function | 3/2 closed, monostable |
| Operating pressure | 2.5 ... 16 bar |
| Duty cycle | 100 % |
| Characteristic coil data | 230 V AC: 50/60 Hz, pick-up power 5 VA, holding power 3.7 VA |
| Permissible voltage fluctuation | -14 % / +10 % |
| Operating medium | Compressed air in accordance with ISO8573-1:2010 [7:4:4] Inert gases |
| Note on operating and pilot medium | Lubricated operation possible (subsequently required for further operation) |
| Corrosion resistance classification CRC | 2 - Moderate corrosion stress |
| Materials note | Conforms to RoHS |
| Medium temperature | -10 ... 60 °C |
| Ambient temperature | -10 ... 60 °C |
| CE mark (see declaration of conformity) | to EU directive low-voltage devices |
| Mounting type | Line installation with accessories |
| Assembly position | Any |
| Flow direction | non reversible |
| Product weight | 500 g |
| Pneumatic connection, port 3 | G1/4 |
| Air purity class at output | Compressed air in accordance with ISO8573-1:2010 [7:4:4] Inert gases |
| Electrical connection | Plug pattern type C to EN 175301-803 Plug Per DIN EN 175301-803 |
| Signal status display | with accessories |
| Material seals | NBR |
| Material housing | Aluminium die cast |