

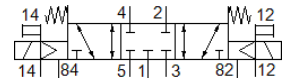
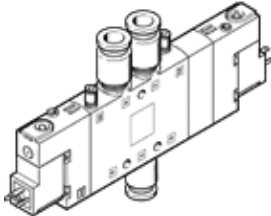
# solenoid valve

## CPE18-M1H-5/3GS-QS-10

Part number: 170260

FESTO

High component density  
This type is suitable for vacuum.



## Data sheet

| Feature                                 | Value                                                                                          |
|-----------------------------------------|------------------------------------------------------------------------------------------------|
| Valve function                          | 5/3 closed                                                                                     |
| Type of actuation                       | electrical                                                                                     |
| Width                                   | 18 mm                                                                                          |
| Standard nominal flow rate              | 1,050 l/min                                                                                    |
| Operating pressure                      | -0.9 ... 10 bar                                                                                |
| Design structure                        | Piston slide                                                                                   |
| Type of reset                           | mechanical spring                                                                              |
| Authorisation                           | c UL us - Recognized (OL)                                                                      |
| Maritime classification                 | see certificate                                                                                |
| Protection class                        | IP65<br>with plug socket<br>to IEC 60529                                                       |
| Nominal size                            | 8 mm                                                                                           |
| Exhaust-air function                    | throttleable                                                                                   |
| Sealing principle                       | soft                                                                                           |
| Assembly position                       | Any                                                                                            |
| Manual override                         | with accessories, detenting<br>Pushing                                                         |
| Type of piloting                        | Piloted                                                                                        |
| Pilot air supply                        | external                                                                                       |
| Flow direction                          | reversible                                                                                     |
| Valve position identification           | Inscription label holder                                                                       |
| Overlap                                 | Positive overlap                                                                               |
| Pilot pressure                          | 2.5 ... 10 bar                                                                                 |
| Switching time off                      | 38 ms                                                                                          |
| Switching time on                       | 20 ms                                                                                          |
| Duty cycle                              | 100 %                                                                                          |
| Max. positive test pulse with logic 0   | 3,300 µs                                                                                       |
| Max. negative test pulse with logic 1   | 3,100 µs                                                                                       |
| Characteristic coil data                | 24 V DC: 1.5 W                                                                                 |
| Permissible voltage fluctuation         | -15 % / +10 %                                                                                  |
| Operating medium                        | Compressed air in accordance with ISO8573-1:2010 [7:4:4]                                       |
| Note on operating and pilot medium      | Lubricated operation possible (subsequently required for further operation)                    |
| Vibration resistance                    | Transport application test at severity level 2 in accordance with FN 942017-4 and EN 60068-2-6 |
| Shock resistance                        | Shock test with severity level 2 in accordance with FN 942017-5 and EN 60068-2-27              |
| Corrosion resistance classification CRC | 2 - Moderate corrosion stress                                                                  |
| Medium temperature                      | -5 ... 50 °C                                                                                   |
| Pilot medium                            | Compressed air in accordance with ISO8573-1:2010 [7:4:4]                                       |
| Ambient temperature                     | -5 ... 50 °C                                                                                   |
| Electrical connection                   | Plug pattern type C to EN 175301-803                                                           |

| Feature                      | Value              |
|------------------------------|--------------------|
| Mounting type                | with through hole  |
| Pilot exhaust port 82        | M5                 |
| Pilot exhaust port 84        | M5                 |
| Pilot air port 12            | M5                 |
| Pilot air port 14            | M5                 |
| Pneumatic connection, port 1 | QS-10              |
| Pneumatic connection, port 2 | QS-10              |
| Pneumatic connection, port 3 | G1/4               |
| Pneumatic connection, port 4 | QS-10              |
| Pneumatic connection, port 5 | G1/4               |
| Materials note               | Conforms to RoHS   |
| Material seals               | NBR                |
| Material housing             | Aluminium die cast |