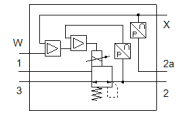
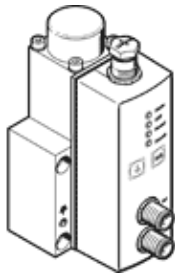


# proportional pressure regulator VPPL-3Q-3-0L40H-V1-V-S1-1

Part number: 1635978

FESTO



## Data sheet

| Feature                                   | Value   |
|---|---|
| Nominal diameter, pressurisation          | 2.5 mm  |
| Nominal diameter, exhaust                 | 2.5 mm  |
| Type of actuation                         | electrical  |
| Sealing principle                         | soft  |
| Assembly position                         | Any<br>Preferably upright   |
| Design structure                          | directly-controlled piston regulator                                    |
| Short circuit strength                    | No  |
| Safety instructions                       | Safety setting VPPL   |
| Polarity protected                        | for all electrical connections  |
| Type of reset                             | mechanical spring   |
| Type of piloting                          | direct  |
| Valve function                            | 3-way closed proportional-pressure regulator                            |
| Type of display                           | LED display   |
| Operating pressure                        | $\leq 50$ bar   |
| Pressure regulation range                 | 0.4 ... 40 bar  |
| Inlet pressure 1                          | 0 ... 50 bar  |
| Max. pressure hysteresis                  | 0.3 bar   |
| b value                                   | 0.25  |
| C value                                   | 0.8 l/sbar  |
| Standard nominal flow rate                | 300 l/min   |
| Switching time off                        | 550 ms  |
| Switching time on                         | 300 ms  |
| Operating voltage range DC                | 21.6 ... 27.6 V   |
| Duty cycle                                | 100 %   |
| Max. electrical power consumption         | 26.7 W  |
| Residual ripple                           | 10 %  |
| Signal range, analogue output             | 0 - 10 V  |
| Signal range, analogue input              | 0 - 10 V  |
| SETPOINT/ACTUAL values                    | Voltage type 0 - 10 V   |
| Operating medium                          | Compressed air in accordance with ISO8573-1:2010 [7:4:4]<br>Inert gases |
| Note on operating and pilot medium        | Lubricated operation not possible                                       |
| KC mark                                   | KC-EMV  |
| CE mark (see declaration of conformity)   | to EU directive for EMC   |
| Corrosion resistance classification CRC   | 2 - Moderate corrosion stress   |
| Medium temperature                        | 5 ... 50 °C   |
| Protection class                          | IP65  |
| Ambient temperature                       | 5 ... 50 °C   |
| Product weight                            | 1,100 g   |
| Linearity error in $\pm$ %FS              | 1 %FS   |
| Temperature coefficient                   | 0.04 %/K  |
| Repetition accuracy in $\pm$ %FS          | 1 %FS   |
| Diagnosis interface electrical connection | Socket, M12, 5-pin, A-coded   |
| Electrical connection IN                  | Plug, M12, 5-pin, A-coded   |
| Electrical connection OUT                 | Plug, M12, 5-pin, A-coded   |

| Feature                      | Value                               |
|------------------------------|-------------------------------------|
| Mounting type                | with through hole                   |
| Pneumatic connection, port 1 | Flange                              |
| Pneumatic connection, port 2 | Flange                              |
| Pneumatic connection, port 3 | Flange                              |
| Materials note               | Conforms to RoHS                    |
| Material housing             | Wrought Aluminium alloy<br>Anodised |