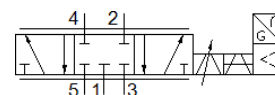
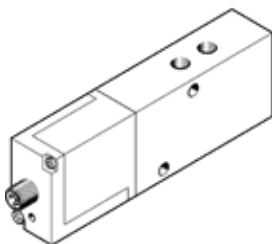


proportional directional control valve MPYE-5-1/8-LF-420-B

Part number: 161978

FESTO



Data sheet

Feature	Value
Nominal size	4 mm
Type of actuation	electrical
Sealing principle	Hard
Assembly position	Any
Design structure	Piston slide
Type of reset	Magnetic spring
Safety instructions	MPYE safety position: If the power supply cable is interrupted, travel occurs to the closed mid-position
Type of piloting	direct
Flow direction	non reversible
Valve function	5/3 closed
Polarity protected	for setpoint value
Operating pressure	0 ... 10 bar
b value	0.12
C value	1.65 l/sbar
Standard nominal flow rate	350 l/min
Limit frequency	95 Hz
Max. hysteresis	0.4 %
Operating voltage range DC	17 ... 30 V
Residual ripple	5 %
SETPOINT/ACTUAL values	Current type 4 - 20 mA
Authorisation	RCM Mark
KC mark	KC-EMV
CE mark (see declaration of conformity)	to EU directive for EMC
Operating medium	Compressed air in accordance with ISO8573-1:2010 [6:4:4]
Note on operating and pilot medium	Lubricated operation not possible
Corrosion resistance classification CRC	2 - Moderate corrosion stress
Medium temperature	5 ... 40 °C
Protection class	IP65
Ambient temperature	0 ... 50 °C
Product weight	285 g
Electrical connection	4-pin M12x1 Plug Round design
Mounting type	with through hole
Pneumatic connection, port 1	G1/8
Pneumatic connection, port 2	G1/8
Pneumatic connection, port 3	G1/8
Pneumatic connection, port 4	G1/8
Pneumatic connection, port 5	G1/8
Materials note	Conforms to RoHS
Material cover	ABS coated
Material seals	NBR
Material housing	Aluminium Anodised