

# solenoid valve

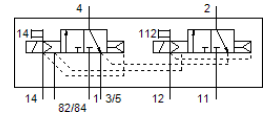
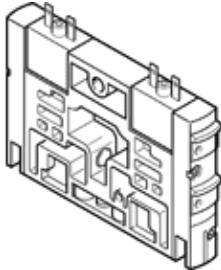
## CPV14-M1H-2X3-GLS-1/8

Part number: 161362

FESTO

For valve terminal CPV. The valve housing contains two 3/2-way valves, both of which are normally closed.

This type is suitable for vacuum.



## Data sheet

| Feature                                 | Value  |
|---|--|
| Valve function                          | 3/2 closed, monostable   |
| Type of actuation                       | electrical   |
| Valve size                              | 14 mm  |
| Standard nominal flow rate              | 800 l/min  |
| Operating pressure                      | -0.9 ... 10 bar  |
| Design structure                        | Piston slide   |
| Type of reset                           | Air spring   |
| Protection class                        | IP65   |
| Nominal size                            | 6 mm   |
| Exhaust-air function                    | not throttleable   |
| Sealing principle                       | soft   |
| Assembly position                       | Any  |
| Manual override                         | detenting<br>Pushing   |
| Type of piloting                        | Piloted  |
| Pilot air supply                        | external<br>Internal   |
| Flow direction                          | non reversible   |
| Overlap                                 | Positive overlap   |
| Pilot pressure                          | 3 ... 8 bar  |
| b value                                 | 0.42   |
| C value                                 | 3.2 l/sbar   |
| Switching time off                      | 30 ms  |
| Switching time on                       | 24 ms  |
| Duty cycle                              | 100% with holding current reduction  |
| Electrical power consumption            | 0.65 W   |
| Max. positive test pulse with logic 0   | 1,400 µs   |
| Max. negative test pulse with logic 1   | 400 µs   |
| Operating medium                        | Compressed air in accordance with ISO8573-1:2010 [7:4:4]                                       |
| Note on operating and pilot medium      | Lubricated operation possible (subsequently required for further operation)                    |
| Vibration resistance                    | Transport application test at severity level 2 in accordance with FN 942017-4 and EN 60068-2-6 |
| Shock resistance                        | Shock test with severity level 2 in accordance with FN 942017-5 and EN 60068-2-27              |
| Corrosion resistance classification CRC | 2 - Moderate corrosion stress  |
| Storage temperature                     | -20 ... 40 °C  |
| Medium temperature                      | -5 ... 50 °C   |
| Ambient temperature                     | -5 ... 50 °C   |
| Product weight                          | 120 g  |
| Mounting type                           | with through hole  |
| Auxiliary pilot air port 12/14          | Common line  |

| Feature                      | Value  |
|------------------------------|--|
| Pilot exhaust port 82/84     | Common line  |
| Pneumatic connection, port 1 | Common line  |
| Pneumatic connection, 11     | Common line  |
| Pneumatic connection, port 2 | G1/8   |
| Pneumatic ports 3/5 combined | Common line  |
| Pneumatic connection, port 4 | G1/8   |
| Materials note               | Conforms to RoHS                                   |
| Material seals               | HNBR<br>NBR  |
| Material housing             | Aluminium die cast<br>Brass<br>POM<br>PPS<br>Steel |