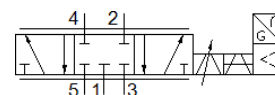
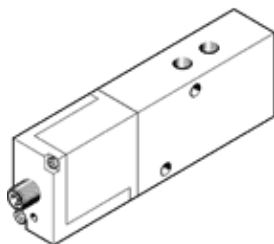


proportional directional control valve

MPYE-5-M5-010-B

Part number: 154200

FESTO



Data sheet

Feature	Value
Nominal size	2 mm
Type of actuation	electrical
Sealing principle	Hard
Assembly position	Any
Design structure	Piston slide
Type of reset	Magnetic spring
Safety instructions	MPYE safety position: If the power supply cable is interrupted, travel occurs to the closed mid-position
Type of piloting	direct
Flow direction	non reversible
Valve function	5/3 closed
Polarity protected	for all electrical connections
Operating pressure	0 ... 10 bar
b value	0.21
C value	0.45 l/sbar
Standard nominal flow rate	100 l/min
Limit frequency	115 Hz
Max. hysteresis	0.4 %
Operating voltage range DC	17 ... 30 V
Residual ripple	5 %
SETPOINT/ACTUAL values	Voltage type 0 - 10 V
Authorisation	RCM Mark
KC mark	KC-EMV
CE mark (see declaration of conformity)	to EU directive for EMC
Operating medium	Compressed air in accordance with ISO8573-1:2010 [6:4:4]
Note on operating and pilot medium	Lubricated operation not possible
Corrosion resistance classification CRC	2 - Moderate corrosion stress
Medium temperature	5 ... 40 °C
Protection class	IP65
Ambient temperature	0 ... 50 °C
Product weight	255 g
Electrical connection	4-pin M12x1 Plug Round design
Mounting type	with through hole
Pneumatic connection, port 1	M5
Pneumatic connection, port 2	M5
Pneumatic connection, port 3	M5
Pneumatic connection, port 4	M5
Pneumatic connection, port 5	M5
Materials note	Conforms to RoHS
Material cover	ABS coated
Material seals	NBR
Material housing	Aluminium Anodised