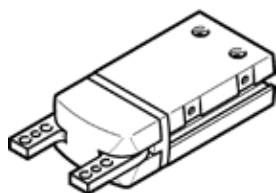
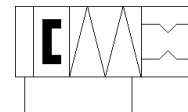


# angle gripper DHWS-16-A-NC

Part number: 1310179

FESTO



## Data sheet

| Feature                                 | Value  |
|---|--|
| Size                                    | 16   |
| Max. replacement accuracy               | $\leq 0.2$ mm  |
| Max. opening angle                      | 40 deg   |
| Rotationally symmetrical                | $\leq 0.2$ mm  |
| Repetition accuracy, gripper            | $\leq 0.04$ mm   |
| Number of gripper fingers               | 2  |
| Assembly position                       | Any  |
| Mode of operation                       | double-acting  |
| Gripper function                        | Angle  |
| Gripper force back-up                   | On closing   |
| Design structure                        | Lever  |
| Position detection                      | For proximity sensor   |
| Operating pressure                      | 4 ... 8 bar  |
| Max. operating frequency of gripper     | $\leq 4$ Hz  |
| Min. opening time at 6 bar              | 62 ms  |
| Min. closing time at 6 bar              | 36 ms  |
| Operating medium                        | Compressed air in accordance with ISO8573-1:2010 [7:4:4]                                 |
| Note on operating and pilot medium      | Lubricated operation possible (subsequently required for further operation)              |
| Corrosion resistance classification CRC | 1 - Low corrosion stress   |
| Ambient temperature                     | 5 ... 60 °C  |
| Mass moment of inertia                  | 0.15 kgcm <sup>2</sup>   |
| Max. force on gripper jaw Fz static     | 50 N   |
| Max. torque at gripper Mx static        | 1.6 Nm   |
| Max. torque at gripper My static        | 1.6 Nm   |
| Max. torque at gripper Mz static        | 1.6 Nm   |
| Product weight                          | 114 g  |
| Mounting type                           | Internal thread and centring sleeve<br>With through-hole and centring sleeve<br>Optional |
| Pneumatic connection                    | M3   |
| Materials note                          | Conforms to RoHS   |
| Material cover cap                      | PA   |
| Material housing                        | Wrought Aluminium alloy<br>Hard anodised   |
| Material gripper jaws                   | High alloy steel   |