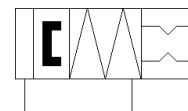
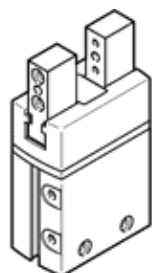


parallel gripper DHPS-20-A-NC

Part number: 1254048

FESTO



Data sheet

Feature	Value
Size	20
Stroke per gripper jaw	6.5 mm
Max. replacement accuracy	≤ 0.2 mm
Max. angular gripper jaw backlash ax,ay	< 0.5 deg
Max. gripper jaw backlash Sz	< 0.02 mm
Rotationally symmetrical	≤ 0.2 mm
Repetition accuracy, gripper	< 0.02 mm
Number of gripper fingers	2
Assembly position	Any
Mode of operation	double-acting
Gripper function	Parallel
Gripper force back-up	On closing
Design structure	Lever guided motion sequence
Guide	Plain-bearing guide
Position detection	For proximity sensor
Operating pressure	4 ... 8 bar
Max. operating frequency of gripper	3 Hz
Min. opening time at 6 bar	72 ms
Min. closing time at 6 bar	62 ms
Operating medium	Compressed air in accordance with ISO8573-1:2010 [7:4:4]
Note on operating and pilot medium	Lubricated operation possible (subsequently required for further operation)
Corrosion resistance classification CRC	1 - Low corrosion stress
Ambient temperature	5 ... 60 °C
Mass moment of inertia	1.494 kgcm ²
Max. force on gripper jaw Fz static	250 N
Max. torque at gripper Mx static	14 Nm
Max. torque at gripper My static	14 Nm
Max. torque at gripper Mz static	14 Nm
Lubrication interval for guide components	10 Mio SP
Max. mass per external gripper finger	250 g
Product weight	387 g
Mounting type	Internal thread and centring sleeve With through-hole and centring sleeve Optional
Pneumatic connection	M5
Materials note	Conforms to RoHS
Material cover cap	PA
Material housing	Wrought Aluminium alloy Hard anodised
Material gripper jaws	High alloy steel, non-corrosive