

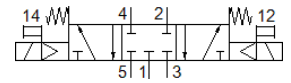
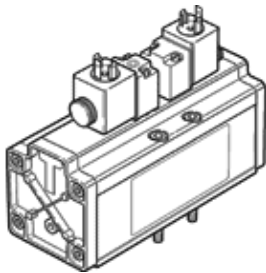
solenoid valve

MDH-5/3G-3/4-D-4-24DC

Part number: 12459

FESTO

With pilot valve and manual override, no socket connector



Data sheet

| Feature | Value |
|---------------------------------------|--|
| Valve function | 5/3 closed |
| Type of actuation | electrical |
| Width | 76 mm |
| Standard nominal flow rate | 4,800 l/min |
| Operating pressure | 3 ... 16 bar |
| Design structure | Piston slide |
| Type of reset | mechanical spring |
| Protection class | IP65 |
| Nominal size | 18 mm |
| Grid dimension | 82 mm |
| Exhaust-air function | throttleable |
| Sealing principle | soft |
| Assembly position | Any |
| Conforms to standard | ISO 5599-1 |
| Manual override | Pushing |
| ISO code | 456 |
| Type of piloting | Piloted |
| Pilot air supply | Internal |
| Flow direction | non reversible |
| Overlap | Positive overlap |
| Switching time off | 290 ms |
| Switching time on | 85 ms |
| Duty cycle | 100 % |
| Max. positive test pulse with logic 0 | 4,300 µs |
| Max. negative test pulse with logic 1 | 2,100 µs |
| Characteristic coil data | 24 V DC: 6.8 W 48 V AC: 50/60 Hz, pick-up power 14.5 VA, holding power 9.9 VA |
| Operating medium | Compressed air in accordance with ISO8573-1:2010 [7:4:4] |
| Note on operating and pilot medium | Lubricated operation possible (subsequently required for further operation) |
| Medium temperature | -10 ... 60 °C |
| Sound pressure level | 85 dB(A) |
| Ambient temperature | -10 ... 50 °C |
| Product weight | 2,600 g |
| Electrical connection | Per DIN EN 175301-803 |
| Mounting type | On sub-base With through-hole and screw |
| Pilot exhaust port 82 | M5 |
| Pilot exhaust port 84 | M5 |
| Pneumatic connection, port 1 | Connection plate size 4 as per ISO 5599-1 |
| Pneumatic connection, port 2 | Connection plate size 4 as per ISO 5599-1 |
| Pneumatic connection, port 3 | Connection plate size 4 as per ISO 5599-1 |
| Pneumatic connection, port 4 | Connection plate size 4 as per ISO 5599-1 |
| Pneumatic connection, port 5 | Connection plate size 4 as per ISO 5599-1 |
| Materials note | Conforms to RoHS |
| Material seals | NBR |
| Material housing | Aluminium |