

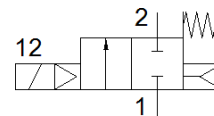
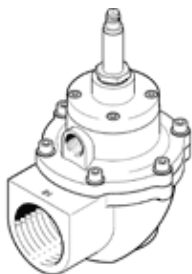
basic valve

VZWE-E-M22C-M-G112-400-H

Part number: 1239565

FESTO

Reverse jet pulse valve, angle design



Data sheet

Feature	Value
Design structure	Corner design Diaphragm valve
Type of actuation	electrical
Sealing principle	soft
Assembly position	Any
Mounting type	Tightened with thread
Process valve connection 1	G1 1/2
Process valve connection 2	G1 1/2
Nominal size	40 mm
Valve function	2/2 closed, monostable
Manual override	None
Flow direction	non reversible
Medium	Compressed air in accordance with ISO8573-1:2010 [7:4:4]
Differential pressure	0.35 bar
Type of reset	mechanical spring
Type of piloting	Piloted
Medium pressure	0.35 ... 8 bar
Note on operating and pilot medium	Lubricated operation not possible
Ambient temperature	-20 ... 60 °C
Flow rate Kv	48 m ³ /h
Switching time on	≤ 30 ms
Switching time off	≤ 100 ms
Materials note	Contains PWIS substances Conforms to RoHS
Material housing	Aluminium die cast
Material number for housing	EN AC-47100D
Material seals	NBR
Material screws	High alloy steel, non-corrosive
Material number, screw	1.4301
Material plunger tube	High alloy steel
Material membrane	NBR-PA
Product weight	1,300 g
Protection class	IP65
Corrosion resistance classification CRC	3 - High corrosion stress
Max. tightening torque, connecting thread	240 Nm