

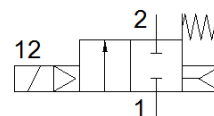
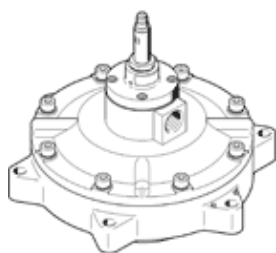
basic valve

VZWE-F-M22C-M-F890-760-H

Part number: 1214036

FESTO

Reverse jet pulse valve, angle design



Data sheet

| Feature | Value |
|---|--|
| Design structure | Straight version with flange Diaphragm valve |
| Type of actuation | electrical |
| Sealing principle | soft |
| Assembly position | Any |
| Mounting type | Tightened with thread |
| Process valve connection 1 | Flange diameter: 89 mm |
| Process valve connection 2 | Flange diameter: 162 mm |
| Nominal size | 76 mm |
| Valve function | 2/2 closed, monostable |
| Manual override | None |
| Flow direction | non reversible |
| Medium | Compressed air in accordance with ISO8573-1:2010 [7:4:4] |
| Differential pressure | 0.35 bar |
| Type of reset | mechanical spring |
| Type of piloting | Piloted |
| Medium pressure | 0.35 ... 8 bar |
| Note on operating and pilot medium | Lubricated operation not possible |
| Ambient temperature | -20 ... 60 °C |
| Flow rate Kv | 210 m ³ /h |
| Switching time on | ≤ 30 ms |
| Switching time off | ≤ 100 ms |
| Materials note | Contains PWIS substances Conforms to RoHS |
| Material housing | Aluminium die cast |
| Material number for housing | EN AC-47100D |
| Material seals | NBR |
| Material screws | High alloy steel, non-corrosive |
| Material number, screw | 1.4301 |
| Material plunger tube | High alloy steel |
| Material membrane | NBR-PA |
| Product weight | 3,600 g |
| Protection class | IP65 |
| Corrosion resistance classification CRC | 3 - High corrosion stress |