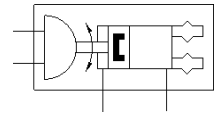
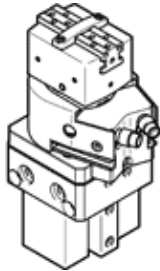


# swivel/gripper unit HGDS-PP-16-P1-A-B

Part number: 1187959

FESTO

with elastic cushioning and fixed stop.



## Data sheet

Feature	Value
Size	16
Rotation angle adjustment range	0 ... 210 deg
Stroke per gripper jaw	4.5 mm
Max. angular gripper jaw backlash ax,ay	0.1 deg
Max. gripper jaw backlash Sz	0.02 mm
Swivel angle	210 deg
Number of gripper fingers	2
Cushioning of swivel drive	Elastic cushioning rings/pads at both ends, end positions adjustable, with fixed stop
Assembly position	Any
Fine adjustment of swivel drive	-6 deg
Mode of operation	double-acting
Gripper function	Parallel
Design structure	Swivel drive With parallel gripper and gripper drive
Position detection, gripper	with proximity sensor
Position detection, swivel drive	with proximity sensor
Operating pressure	3 ... 8 bar
Max. swivel frequency at 6 bar	2 Hz
Min. opening time at 6 bar	40 ms
Min. closing time at 6 bar	60 ms
Operating medium	Compressed air in accordance with ISO8573-1:2010 [7:4:4]
Note on operating and pilot medium	Lubricated operation possible (subsequently required for further operation)
Corrosion resistance classification CRC	2 - Moderate corrosion stress
Ambient temperature	5 ... 60 °C
Gripping force per gripper jaw at 6 bar, opening	58 N
Total force at 6 bar, opening	116 N
Gripping force per gripper jaw at 6 bar, closing	51 N
Total force at 6 bar, closing	102 N
Max. force on gripper jaw Fz static	150 N
Max. torque at gripper Mx static	11 Nm
Max. torque at gripper My static	11 Nm
Max. torque at gripper Mz static	11 Nm
Theoretical torque at 6 bar	1.25 Nm
Max. mass per external gripper finger	50 g
Product weight	730 g
Mounting type	Internal thread and centring sleeve With through-hole and centring sleeve With dovetail slot Optional
Pneumatic connection	M5
Materials note	Conforms to RoHS
Material of drive shaft	Steel

Feature	Value
Material cover	Aluminium POM
Material seals	NBR
Material housing	Wrought Aluminium alloy
Material gripper jaws	High alloy steel, non-corrosive