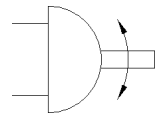
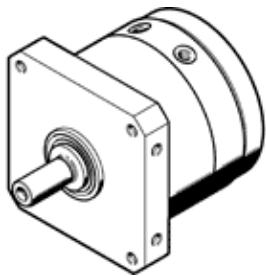


semi-rotary drive DSM-T-32-270-A-B

Part number: 1145125

FESTO



Data sheet

Feature	Value
Size	32
Swivel angle	0 ... 270 deg
Assembly position	Any
Mode of operation	double-acting
Design structure	Rotary vane
Position detection	For proximity sensor
Operating pressure	2 ... 10 bar
Max. swivel frequency at 6 bar	2 Hz
Operating medium	Compressed air in accordance with ISO8573-1:2010 [7:::]
Corrosion resistance classification CRC	0 - No corrosion stress
Ambient temperature	-10 ... 60 °C
Max. axial force	75 N
Max. radial force	200 N
Theoretical torque at 6 bar	20 Nm
Product weight	1,865 g
Mounting type	with internal (female) thread
Pneumatic connection	G1/8
Materials note	Free of copper and PTFE Conforms to RoHS
Material of drive shaft	Steel Nickel plated
Material seals	TPE-U(PU)
Material housing	Wrought Aluminium alloy