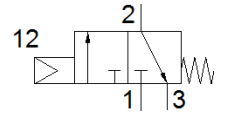
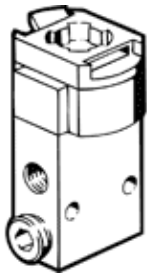


front panel valve SVS-3-1/8

Part number: 10190

FESTO



Data sheet

| Feature | Value |
|------------------------------|--|
| Valve function | 3/2 closed, monostable |
| Type of actuation | mechanical |
| Standard nominal flow rate | 120 l/min |
| Operating pressure | 3.5 ... 8 bar |
| Design structure | Piston seat |
| Type of reset | mechanical spring |
| Sealing principle | soft |
| Assembly position | Any |
| Type of piloting | Piloted |
| Flow direction | non reversible |
| Note on forced dynamisation | Switching frequency at least once a week |
| Operating medium | Compressed air in accordance with ISO8573-1:2010 [-:-:-] |
| Medium temperature | -10 ... 60 °C |
| Ambient temperature | -10 ... 60 °C |
| Actuating force | 8 N |
| Mounting type | with through hole |
| Pneumatic connection, port 1 | G1/8 |
| Pneumatic connection, port 2 | G1/8 |
| Pneumatic connection, port 3 | G1/8 |
| Materials note | Conforms to RoHS |
| Material cover | POM |
| Material seals | NBR TPE-U(PU) |
| Material housing | Aluminium |