

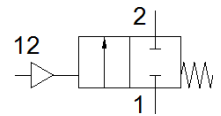
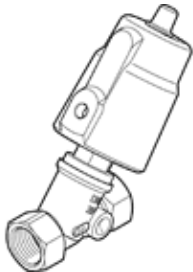
angle seat valve

VZXF-L-M22C-M-A-N34-160-H3B1-50-16

Part number: 1002535

FESTO

Pneumatically actuated angle seat valve in red brass. Over seat version, safety position closed, NPT thread, nominal width 3/4".



Data sheet

Feature	Value
Design structure	Poppet valve with piston actuator
Type of actuation	pneumatic
Sealing principle	soft
Assembly position	Any
Mounting type	Line installation
Line connection	NPT $\frac{3}{4}$ threaded collar to ANSI/ASME B 1.20.1
Nominal size	16 mm
Valve function	2/2 closed, monostable
Flow direction	non reversible
Medium pressure	0 ... 16 bar
Nominal pressure of process valve	16
Exhaust-air function	not throttleable
Type of reset	mechanical spring
Type of piloting	With external control
Pneumatic connection	Female thread G1/8
Operating pressure	6 ... 10 bar
Medium	Vapour Inert gases Filtered compressed air, degree of filtration 200 μ m
Flow direction	Above valve seat, for gaseous media
Operating medium	Compressed air in accordance with ISO8573-1:2010 [7:4:4]
Max. viscosity	600 mm ² /s
Medium temperature	-10 ... 80 °C
Ambient temperature	-10 ... 60 °C
Flow rate Kv	6.7 m ³ /h
Materials note	Contains PWIS substances Conforms to RoHS
Material process valve housing	Gunmetal (red brass)
Material number, process valve housing	CC499K
Material spindle seal	NBR
Material seat seal	PTFE
Product weight	1,300 g
Corrosion resistance classification CRC	1 - Low corrosion stress
Material drive housing	Brass