





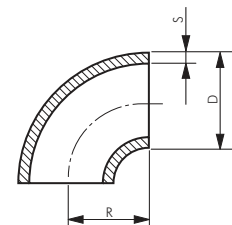
Rohrbögen 90° Bauart 3

EN 10253 Typ A (DIN 2605)

Typ 1.4571* 	Typ 1.4541 	Typ 1.4571* 	Typ 1.4541 	Typ P235GH-TC1 Stahl schwarz	Anschluss	
geschweißte Ausführung		nahtlose Ausführung			D x S	R
---	---	W1215A6	W1215A4	---	12,0 x 1,5	26,0
---	---	W1515A6	W1515A4	---	15,0 x 1,5	27,5
---	---	W1520A6	---	---	x 2,0	27,5
W17,216GA6	---	---	---	---	17,2 x 1,6	27,5
---	W17,220GA4	W17,220A6	---	---	x 2,0	27,5
---	---	W17,223A6	W17,223A4	---	x 2,3	27,5
W1815GA6	W1815GA4	---	---	---	18,0 x 1,5	22,5
W1820GA6	---	W1820A6	---	---	x 2,0	22,5
W2015GA6	W2015GA4	---	---	---	20,0 x 1,5	25,0
W2020GA6	W2020GA4	W2020A6	W2020A4	---	x 2,0	25,0
W21,316GA6	W21,316GA4	---	---	---	21,3 x 1,6	28,0
W21,320GA6	W21,320GA4	W21,320A6	W21,320A4	W21,320ST	x 2,0	28,0
W21,326GA6	W21,326GA4	W21,326A6	W21,326A4	---	x 2,6	28,0
---	---	W21,332A6	W21,332A4	W21,332ST	x 3,2	28,0
W2315GA6	W2315GA4	---	---	---	23,0 x 1,5	25,0
W2515GA6	W2515GA4	---	---	---	25,0 x 1,5	27,5
W2520GA6	W2520GA4	W2520A6	W2520A4	W2520ST	x 2,0	27,5
---	---	W2525A6	---	---	x 2,5	27,5
---	---	W2530A6	---	---	x 3,0	27,5
W26,916GA6	W26,916GA4	---	---	---	26,9 x 1,6	29,0
W26,920GA6	W26,920GA4	W26,920A6	---	---	x 2,0	29,0
---	---	W26,923A6	W26,923A4	W26,923ST	x 2,3	29,0
W26,926GA6	W26,926GA4	W26,926A6	W26,926A4	W26,926ST	x 2,6	29,0
---	---	W26,932A6	W26,932A4	W26,932ST	x 3,2	29,0
---	---	W26,940A6	W26,940A4	W26,940ST	x 4,0	29,0
W2815GA6	W2815GA4	W2815A6	W2815A4	---	28,0 x 1,5	32,5
W2820GA6	W2820GA4	W2820A6	---	---	x 2,0	32,5
W3020GA6	---	W3020A6	W3020A4	---	30,0 x 2,0	33,5
---	---	W3025A6	W3025A4	W3025ST	x 2,5	33,5
---	---	W3030A6	W3030A4	---	x 3,0	33,5
---	---	W3040A6	---	---	x 4,0	33,5
---	---	W3050A6	W3050A4	---	x 5,0	33,5
W33,720GA6	W33,720GA4	W33,720A6	W33,720A4	---	33,7 x 2,0	38,0
W33,726GA6	W33,726GA4	W33,726A6	W33,726A4	W33,726ST	x 2,6	38,0
W33,732GA6	W33,732GA4	W33,732A6	W33,732A4	W33,732ST	x 3,2	38,0
---	---	W33,736A6	W33,736A4	---	x 3,6	38,0
---	---	W33,740A6	W33,740A4	W33,740ST	x 4,0	38,0
W3515GA6	W3515GA4	---	---	---	35,0 x 1,5	45,0
W3520GA6	W3520GA4	---	---	---	x 2,0	45,0
W3820GA6	W3820GA4	---	---	---	38,0 x 2,0	45,0
---	---	W3826A6	W3826A4	W3826ST	x 2,6	45,0
---	---	W3830A6	---	---	x 3,0	45,0
---	---	W3850A6	W3850A4	---	x 5,0	45,0
W4020GA6	W4020GA4	W4020A6	---	---	40,0 x 2,0	45,0
W42,420GA6	W42,420GA4	W42,420A6	W42,420A4	---	42,4 x 2,0	48,0
W42,426GA6	W42,426GA4	W42,426A6	W42,426A4	W42,426ST	x 2,6	48,0
W42,432GA6	W42,432GA4	W42,432A6	W42,432A4	W42,432ST	x 3,2	48,0
---	---	W42,436A6	W42,436A4	W42,436ST	x 3,6	48,0
---	---	W42,440A6	---	---	x 4,0	48,0
W4315GA6	W4315GA4	---	---	---	43,0 x 1,5	47,5
W44,520GA6	W44,520GA4	W44,520A6	---	---	44,5 x 2,0	51,0
W48,320GA6	---	W48,320A6	W48,320A4	---	48,3 x 2,0	57,0
W48,326GA6	W48,326GA4	W48,326A6	W48,326A4	W48,326ST	x 2,6	57,0
---	---	W48,329A6	W48,329A4	---	x 2,9	57,0
W48,332GA6	W48,332GA4	W48,332A6	W48,332A4	W48,332ST	x 3,2	57,0
---	---	W48,336A6	---	W48,336ST	x 3,6	57,0
---	---	W48,340A6	W48,340A4	W48,340ST	x 4,0	57,0
W5120GA6	W5120GA4	---	---	---	51,0 x 2,0	67,5
---	---	W5126A6	W5126A4	W5126ST	x 2,6	67,5
---	---	W5140A6	W5140A4	---	x 4,0	67,5
W5315GA6	W5315GA4	---	---	---	53,0 x 1,5	72,5
W5420GA6	W5420GA4	---	---	---	54,0 x 2,0	70,0
W5720GA6	W5720GA4	---	---	---	57,0 x 2,0	75,0
---	---	W5729A6	W5729A4	W5729ST	x 2,9	75,0
W5730GA6	W5730GA4	---	---	---	x 3,0	75,0
W60,320GA6	W60,320GA4	W60,320A6	W60,320A4	---	60,3 x 2,0	76,0
W60,326GA6	W60,326GA4	W60,326A6	W60,326A4	---	x 2,6	76,0
W60,329GA6	W60,329GA4	W60,329A6	W60,329A4	W60,329ST	x 2,9	76,0
W60,336GA6	W60,336GA4	W60,336A6	W60,336A4	W60,336ST	x 3,6	76,0
W7020GA6	W7020GA4	---	---	---	70,0 x 2,0	92,0

weitere siehe nächste Seite

* Standardlieferprogramm



Weitere Größen auf
der nächsten Seite



Schweißfittings

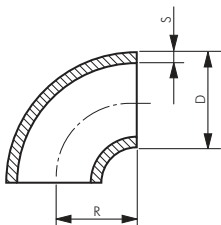
Fortsetzung
von Vorseite

Rohrbögen 90° Bauart 3

EN 10253 Typ A (DIN 2605)



Rostfrei



Typ	Typ	Typ	Typ	Typ P235GH-TC1	Anschluss	
1.4571*	1.4541	1.4571*	1.4541	Stahl schwarz	D x S	R
geschweißte Ausführung		nahtlose Ausführung				
W76,120GA6	W76,120GA4	W76,120A6	---	---	76,1 x 2,0	95,0
W76,126GA6	W76,126GA4	W76,126A6	W76,126A4	---	x 2,6	95,0
W76,129GA6	W76,129GA4	W76,129A6	W76,129A4	W76,129ST	x 2,9	95,0
W76,136GA6	W76,136GA4	W76,136A6	W76,136A4	W76,136ST	x 3,6	95,0
---	---	W76,140A6	W76,140A4	W76,140ST	x 4,0	95,0
---	---	W76,150A6	W76,150A4	W76,150ST	x 5,0	95,0
W88,920GA6	W88,920GA4	---	---	---	88,9 x 2,0	114,0
W88,923GA6	W88,923GA4	---	---	---	x 2,3	114,0
W88,926GA6	W88,926GA4	W88,926A6	W88,926A4	---	x 2,6	114,0
W88,929GA6	W88,929GA4	W88,929A6	---	---	x 2,9	114,0
W88,932GA6	W88,932GA4	W88,932A6	W88,932A4	W88,932ST	x 3,2	114,0
W88,940GA6	W88,940GA4	W88,940A6	W88,940A4	W88,940ST	x 4,0	114,0
W101,630GA6**	---	---	---	---	101,6 x 3,0	133,5
W10420GA6	W10420GA4	---	---	---	104,0 x 2,0	150,0
W10820GA6	W10820GA4	---	---	---	108,0 x 2,0	142,5
W10830GA6	W10830GA4	---	---	---	x 3,0	142,5
W114,320GA6	W114,320GA4	---	---	---	114,3 x 2,0	152,0
W114,326GA6	W114,326GA4	W114,326A6	W114,326A4	---	x 2,6	152,0
W114,330GA6	W114,330GA4	---	---	---	x 3,0	152,0
W114,336GA6	W114,336GA4	W114,336A6	W114,336A4	W114,336ST	x 3,6	152,0
W114,340GA6	W114,340GA4	---	---	W114,340ST	x 4,0	152,0
---	---	W114,345A6	W114,345A4	W114,345ST	x 4,5	152,0
W12920GA6	W12920GA4	---	---	---	129,0 x 2,0	187,5
W13330GA6	W13330GA4	---	---	---	133,0 x 3,0	181,0
---	---	W13340A6	W13340A4	W13340ST	x 4,0	181,0
W139,720GA6	W139,720GA4	---	---	---	139,7 x 2,0	190,0
W139,726GA6	W139,726GA4	---	---	---	x 2,6	190,0
W139,730GA6	W139,730GA4	---	---	---	x 3,0	190,0
W139,740GA6	W139,740GA4	W139,740A6	W139,740A4	W139,740ST	x 4,0	190,0
W15420GA6	W15420GA4	---	---	---	154,0 x 2,0	225,0
W15930GA6	W15930GA4	---	---	---	159,0 x 3,0	216,0
W168,320GA6	W168,320GA4	---	---	---	168,3 x 2,0	229,0
W168,326GA6	W168,326GA4	---	---	---	x 2,6	229,0
W168,330GA6	W168,330GA4	---	---	---	x 3,0	229,0
W168,340GA6	W168,340GA4	---	---	---	x 4,0	229,0
---	---	W168,345A6	W168,345A4	W168,345ST	x 4,5	229,0
W20420GA6	---	---	---	---	204,0 x 2,0	300,0
W219,120GA6	W219,120GA4	---	---	---	219,1 x 2,0	305,0
W219,126GA6	---	---	---	---	x 2,6	305,0
W219,130GA6	W219,130GA4	---	---	---	x 3,0	305,0
W25420GA6	W25420GA4	---	---	---	254,0 x 2,0	375,0
W27330GA6	W27330GA4	---	---	---	273,0 x 3,0	381,0
W323,930GA6	W323,930GA4	---	---	---	323,9 x 3,0	457,0
W355,630GA6	W355,630GA4	---	---	---	355,6 x 3,0	533,0
W406,430GA6	W406,430GA4	---	---	---	406,4 x 3,0	610,0

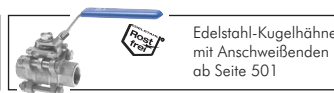
* Standardlieferprogramm, ** 1.4404



Flansche
ab Seite 446



HYDAC
Rohrschellen
ab Seite 432



Edelstahl-Kugelhähne
mit Anschweißenden
ab Seite 501



Durchflussmesser
und Wächter
ab Seite 692



Anschweißnippel &
Anschweißstüben
auf Seite 208



Verschraubungen
mit Anschweißenden
auf Seite 212



Anschweißmuffen
auf Seite 226



Kamlock-Kupplungen
mit Anschweißenden
auf Seite 350

Alle Angaben verstehen sich als unverbindliche Richtwerte! Für nicht schriftlich bestätigte Datenauswahl übernehmen wir keine Haftung. Druckangaben beziehen sich, soweit nicht anders angegeben, auf Flüssigkeiten der Gruppe II bei +20°C.

